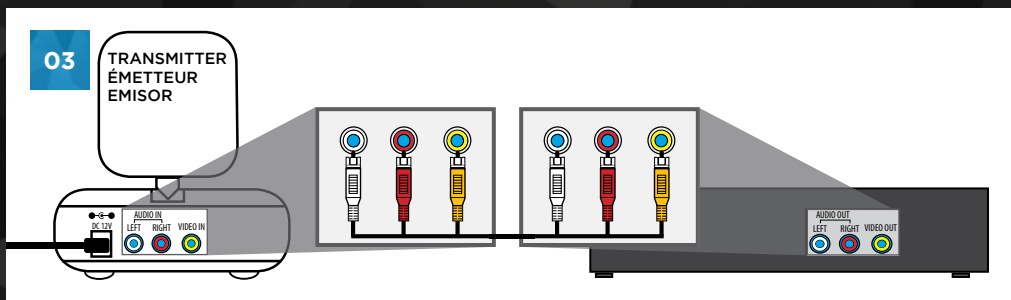
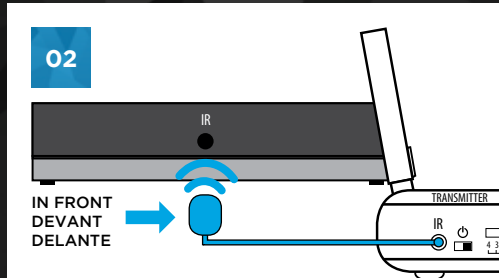
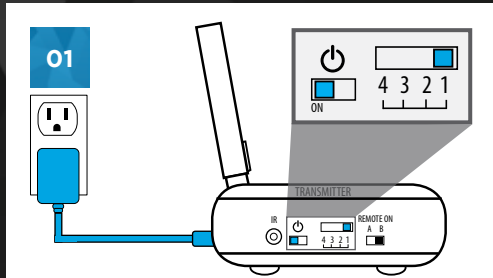


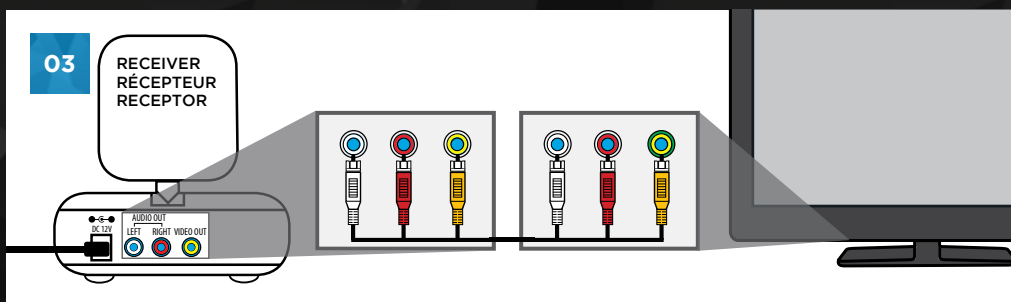
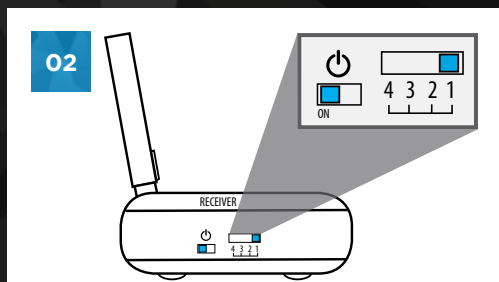
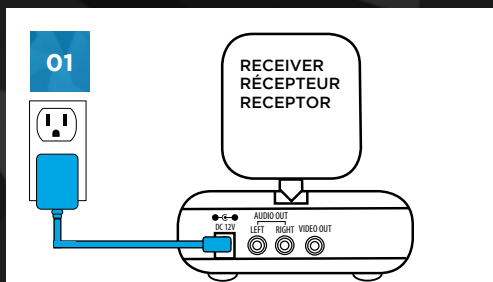
NY-GS10

QUICK START GUIDE GUIDE DE DÉMARRAGE RAPIDE GUÍA DE INICIO RÁPIDO

SETTING UP TRANSMITTER / CONFIGURATION DE L'ÉMETTEUR / CONFIGURACIÓN DEL TRANSMISOR

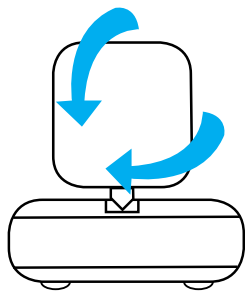


SETTING UP RECEIVER / CONFIGURATION DU RÉCEPTEUR / CONFIGURACIÓN DE RECEPTOR

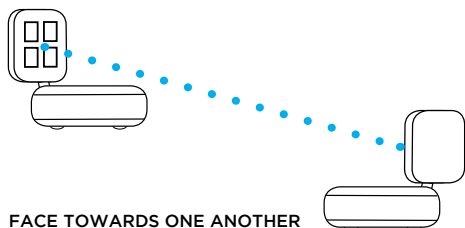


For additional product information, please consult the manual at:
Pour plus de renseignements sur le produit, consultez le manuel à:
Para más información sobre el producto, consulte el manual en:

NYRIUS.COM/SUPPORT



ADJUSTABLE ANTENNA
ANTENNE ORIENTABLE
ANTENA AJUSTABLE



FACE TOWARDS ONE ANOTHER
FAISANT FACE L'UN VERS L'AUTRE
CON LA CARA UNA HACIA LA OTRA



Support & Online live web chat Soutien & Clavardage en ligne Servicio & Chatear en línea

NYRIUS.COM/SUPPORT

Product warranty information

We take quality very seriously. This is why all of our NYRIUS® products come with a one-year warranty from the original purchase date against defects in workmanship and materials.

Informations de la garantie du produit

Nous prenons la qualité très sérieusement. C'est pourquoi tous nos produits NYRIUS® ont une garantie d'un an à partir de la date originale d'achat contre les défauts de fabrication et de matériaux.

Información sobre la garantía del producto

La calidad es un asunto serio para nosotros. Por eso, ofrecemos nuestros productos NYRIUS® con un año de garantía a partir de la fecha original de compra por defectos de fabricación y de los materiales.



This device complies with part 15 of the FCC Rules. Operation is subject to the following two conditions:

- (1) This device may not cause harmful interference.
- (2) This device must accept any interference received, including interference that may cause undesired operation.

FCC WARNING

This equipment has been tested and found to comply with the limits for a Class B digital device, pursuant to Part 15 of the FCC Rules. These limits are designed to provide reasonable protection against harmful interference in a residential installation.

This equipment generates, uses and can radiate radio frequency energy and, if not installed and used in accordance with the instructions, may cause harmful interference to radio communications. However, there is no guarantee that interference will not occur in a particular installation. If this equipment does cause harmful interference to radio or television reception, which can be determined by turning the equipment off and on, the user is encouraged to try to correct the interference by one or more of the following measures:

- Reorient or relocate the receiving antenna.
- Increase the separation between the equipment and the receiver.
- Connect the equipment into an outlet different from that to which the receiver is connected.
- Consult the dealer or an experienced radio/TV technician for help.

CAUTION: Keep small parts away from children.

ATTENTION: Gardez les petites pièces hors de la portée des enfants.

PRECAUCIÓN: Mantenga las piezas pequeñas fuera del alcance de los niños.

NYRIUS Canada
4080 Montrose Road
Niagara Falls, ON
Canada L2H 1J9

NYRIUS USA
60 Industrial Parkway, Suite #Z64
Cheektowaga, NY
USA 14227

- Please retain your original receipt or a copy for warranty service
- Veuillez conserver votre reçu original ou une copie pour obtenir le service sous garantie
- Por favor, conserve el recibo original o una copia para el servicio de la garantía

IC STATEMENT / DÉCLARATION IC:

This Class B digital apparatus complies with ICES-003. / Cet appareil numérique de la classe B est conforme à la norme NMB-003 du Canada.

This device complies with Industry Canada licence-exempt RSS 210 standard(s). Operation is subject to the following two conditions:

- (1) this device may not cause interference, and
- (2) this device must accept any interference, including interference that may cause undesired operation of the device.

Cet appareil est conforme aux CNR 210 d'Industrie Canada applicables aux appareils radio exempts de licence. L'exploitation est autorisée aux deux conditions suivantes :

- (1) l'appareil ne doit pas produire de brouillage, et
- (2) l'utilisateur de l'appareil doit accepter tout brouillage radioélectrique subi, même si le brouillage est susceptible d'en compromettre le fonctionnement.

Changes or modifications not expressly approved by the party responsible for compliance could void the user's authority to operate the equipment.

NYRIUS®